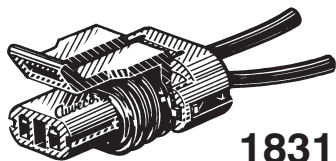
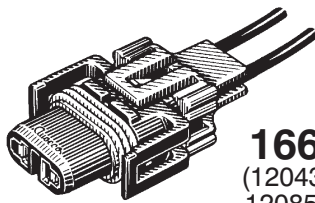


Sec. 12**GM SOCKET ASSY. & HARNESS CONNECTORS**

Use with butt connectors on pages 139 - 147 • Illustrations Not Actual Size

**18318**
(12101857)Air Divert Valve
Harness Connector
GM 1994-87

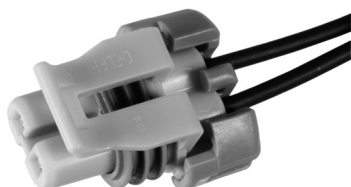
UNIT PACKAGE: 1

**16694**
(12043215,
12085498)Cornering & Fog Light Socket
For 881 & H1 Halogen Bulbs
GM

UNIT PACKAGE: 1

**21212**
(88988609)Window Motor Regulator
Harness Connector
Two 12 Gauge
10" Long Leads
GM 1995 - On

UNIT PACKAGE: 1

**18320**
(12101856)Air Switch Valve
Harness Connector
GM 1993-91

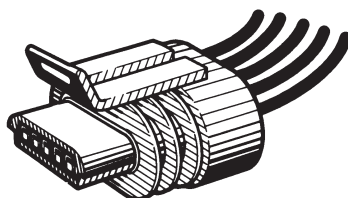
UNIT PACKAGE: 1

**21490**
(GM: 12102664, 88862264)
(Ford: 1U2Z-14S411-YA)Fog & Front Lights,
Pwr. Steering & Oil Pressure Switch
Harness Connector
GM 2005 - 1986
Ford 2004 - 1995
Jeep Eagle 1994

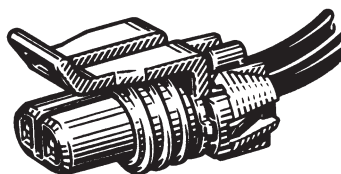
UNIT PACKAGE: 1

**16693**
(12046624,
12102620)Replacement harness connector
used with 1985-on GM Manifold Air
Temperature Sensors including
25036751. Features two 9" long 18
gauge wire leads.

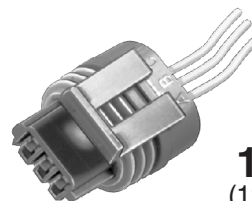
UNIT PACKAGE: 1

**18524**
(12085497)MAP Mass Air Flow Sensor
Harness Connector
GM w/2.8 Eng &
Sequential Fuel Injection
1989-85

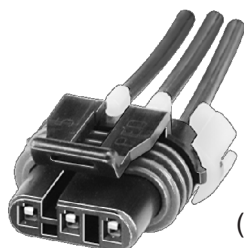
UNIT PACKAGE: 1

**17110**
(12102747)Windshield Washer Pump, Low
Coolant Sensor Harness Connector
GM Cars & Trucks 1992-87

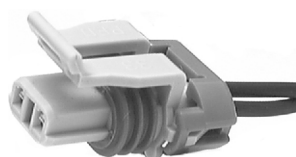
UNIT PACKAGE: 1

**18917**
(12085538)Camshaft Sensor
Harness Connector
Buick, Olds & Pontiac
1992-86

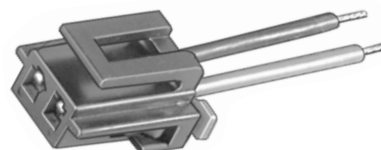
UNIT PACKAGE: 1

**18868**
(12085495)Mass Air Flow Sensor
Harness Connector
GM
1988-On

UNIT PACKAGE: 1

**17111**
(12116958)Horn Harness Connector
Fits Horns 1999160, 1999161,
10456327 and 10456328
GM 1988-On

UNIT PACKAGE: 1

**18925**
(25117765)E.F.I. Fuel Pump
Harness Connector
GM w/ Fuel Pump
In Gas Tank 1995-88

UNIT PACKAGE: 1