

**Sec. 12****FORD SOCKET ASSY. & HARNESS CONNECTORS**

Use with butt connectors on pages 137 - 149 • Illustrations Not Actual Size

**18677**(Not Supplied  
By O.E.M.)Idle Air By-Pass Valve  
Harness Connector  
Fits Valves With Ford  
Base Part Number 9F715  
Ford

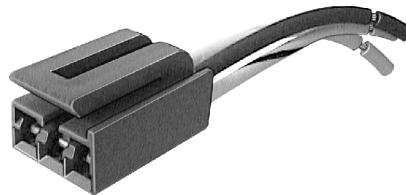
UNIT PACKAGE: 1

**20846**

(F4VY-14A411-S)

Starter Solenoid In-line Repair  
Harness Connector  
12 Ga. Wire Lead  
Ford & Lincoln Town Car  
1997 - 91

UNIT PACKAGE: 1

**19212**(Not Supplied  
By O.E.M.)Inertia Fuel Shut-Off  
Switch Harness Connector  
Fits Switch F5AZ-9341-A  
Ford  
1988-On

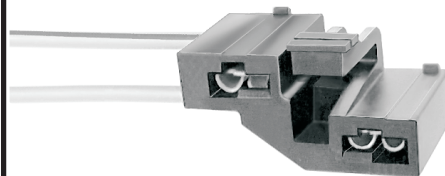
UNIT PACKAGE: 1

**18671**(Not Supplied  
By O.E.M.)Air Conditioner  
Clutch Field Coil  
Harness Connector  
Ford

UNIT PACKAGE: 10

**19076**(Not Supplied  
By O.E.M.)Master Cylinder,  
Door Jamb Switch  
& Power Mirror Harness Connector  
Ford 1987-On

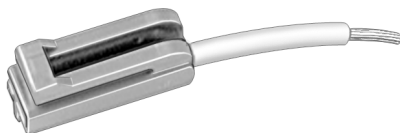
UNIT PACKAGE: 1

**19813**

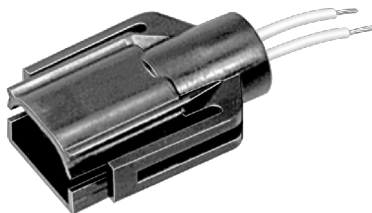
(D1AZ-13410-A)

Power Brake  
Harness Connector  
Ford  
1965-On

UNIT PACKAGE: 10

**19156**(Not Supplied  
By O.E.M.)Alternator Regulator &  
Air Cond. Clutch Field  
Harness Connector  
Ford 1994-On

UNIT PACKAGE: 10

**19157**(Not Supplied  
By O.E.M.)Variable Speed Sensor  
Harness Connector  
For Speed Sensors With  
Ford Base No. 9E731.  
Ford 1993-On

UNIT PACKAGE: 1

**20561**(Not Supplied  
By O.E.M.)Brake Light Switch  
Harness Connector  
Fits Switches YF1Z-13480-AA  
& YF1Z-13480BA  
Ford, Lincoln & Mercury  
2000 - On  
Ford Explorer & Mercury  
Mountaineer  
1999 - 98

UNIT PACKAGE: 1