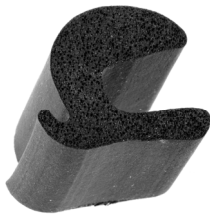


SPONGE RUBBER WEATHERSTRIPS

ACTUAL SIZE ILLUSTRATIONS -EPDM CLOSED CELL

Light Weight -Weather Resistant

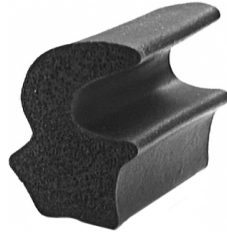
Sec. 16



4743

Trunk Weatherstrip
Universal

UNIT PACKAGE: 35 Ft.



4750

(C5AZ-6243720-B)

Deck Lid Weatherstrip
Ford 1956-On

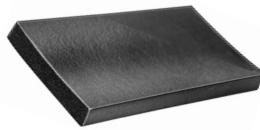
UNIT PACKAGE: 50 Ft.



16524

Door Seal Weatherstrip
GM 1972-64

UNIT PACKAGE: 50 Ft.



4740



19341



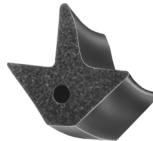
**Extruded Closed Cell
Sponge Rubber**

Will not absorb water or
moisture. Without Cement.

19341 1/8" Thick -3/4" Wide

4740 1/8" Thick -1-1/2" Wide

UNIT PACKAGE: 25 Ft.
(One Size)



20928

Door Flange, Trunk & Tail Gate
Weatherstrip
With 3/32" Dia. Hole
Universal

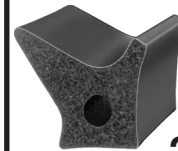
UNIT PACKAGE: 25 Ft.



16525

Door Seal Weatherstrip
GM 1963-55

UNIT PACKAGE: 50 Ft.



20929

Door Flange, Trunk & Tail Gate
Weatherstrip
With 1/8" Dia. Hole
Universal

UNIT PACKAGE: 25 Ft.



4736



4737



4738



**Closed Cell
Half Round
Sponge Rubber**

47361/4" Half Round

47373/8" Half Round

47381/2" Half Round

UNIT PACKAGE: 50 Ft.
(One Size)



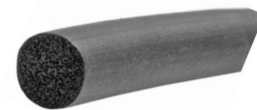
4654



4655



4656



**Closed Cell
Sponge Rubber Windlace Cord**

Flexible filler for cloth covered windlace on door and
windshield pillars and door bottoms.

46541/4" Diameter

46553/8" Diameter

46561/2" Diameter

UNIT PACKAGE: 50 Ft.
(One Size)